

# BR-42 Series

## LED Architectural Vandal Resistant Bollard

Type:

Catalog Number:

Project/Location:

Approved By:

### SPECIFICATIONS

**Housing:** Heavy-duty construction of corrosion resistant extruded aluminum. Heavy-duty corrosion resistant die-cast aluminum top cap with 6 die-cast louvers.

**Gasket:** Closed cell silicone foam gasket. Seals out moisture, dust, and insects for weather-tight operation.

**Mounting:** Secures with 3/8" x 6" galvanized anchor bolts.

**Lens:** 1/8" thick, opal UV stabilized, polycarbonate lens. Provides Type V symmetrical distribution.

**Driver:** Constant current and Universal input voltage 120-277V, 50-60Hz line voltage frequency. Operating temperature -20°C to 40°C, Power Factor  $\geq .90$ .

**LED:** Specify amber (A), blue (B), green (G), red (R), or 3000 (30K), 3500 (35K), 4000 (40K), and 5000 (50K) – 40K standard.

**Lumens:** 840.

**Finish/Colors:** Zinc based primer with polyester powder coat finish in Matte Black (MB), Matte White (MW), Matte Bronze (BZ), Silver Gray (SG), or a custom color (CC).

**Testing:** LM79, LM80, ETL. Conforms to UL Standard 1598. Suitable for wet locations.

#### Options:

FLA Harsh environment finish

TF Turtle Friendly 590 nm Amber LED

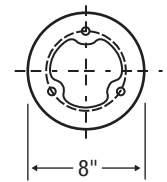
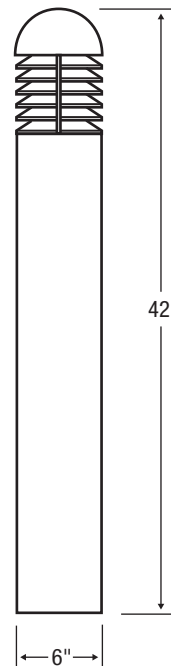
HSS House side shield, specify 90°, 180° or 270°

*See options page for additional information or consult factory.*



FRONT

BASE



Bolt Circle 6" dia



EMERGENCY BATTERY  
BACKUP AVAILABLE

Series	Source	Wattage/Max
BR-42	LED	24W

### ORDERING EXAMPLE

BR-42 – 24WLED – 40K – 120 – MB

## ELCAST LIGHTING

815 S. Kay Ave., Addison, IL 60101 USA • 630.543.5390

www.ElcastLtg.com • ElcastLtg@ElcastLtg.com

**Made in USA** – 5 year limited warranty

©2017. Specifications are subject to change without notice. Consult factory for verification.

REV 05-19