

1206 Series

LED Steplight

Type:

Catalog Number:

Project/Location:

Approved By:

SPECIFICATIONS

Housing: Heavy-duty construction of corrosion resistant die cast aluminum. Faceplate shall be secured using stainless steel hardware. Housing provided with 1/2" conduit opening. Suitable for concrete pour.

Faceplate: Low brightness stepped baffle. Secured to housing with four stainless steel screws. Provides glare-free light distribution.

Gasket: Closed cell silicone foam gasket. Seals out moisture, dust, and insects for weather-tight operation.

Mounting: Recessed wall or optional surface box.

Lens: 1/8" thick UV stabilized polycarbonate lens.

Driver: Solid state electronic constant current. Input voltage 120 Volt only. Operating temperature -20°C to 40°C, Power Factor ≥ .90.

LED: Specify amber (A), blue (B), green (G), red (R), or 3000 (30K), 3500 (35K), 4000 (40K), and 5000 (50K) – 40K standard.

Lumens: 150.

Finish/Colors: Zinc based primer with polyester powder coat finish in Matte Black (MB), Matte White (MW), Matte Bronze (BZ), Silver Gray (SG), or a custom color (CC).

Testing: LM79, LM80, ETL.
Conforms to UL Standard 1598. Suitable for wet locations.

Options:

F1	Single fuse	G	Green LED
S	Surface mount	A	Amber LED (turtle friendly)
B	Blue LED	TW	Thru Wire
R	Red LED		

See options page for additional information or consult factory.



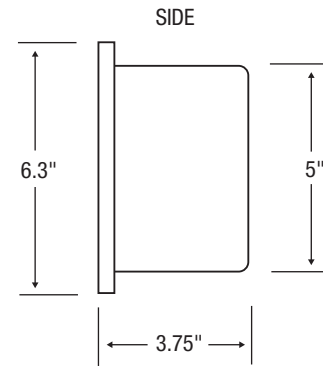
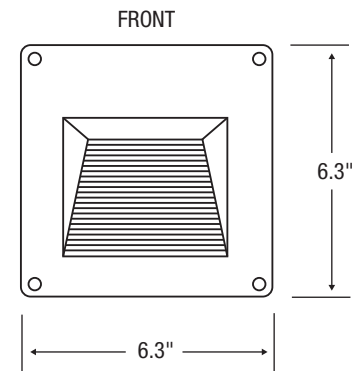
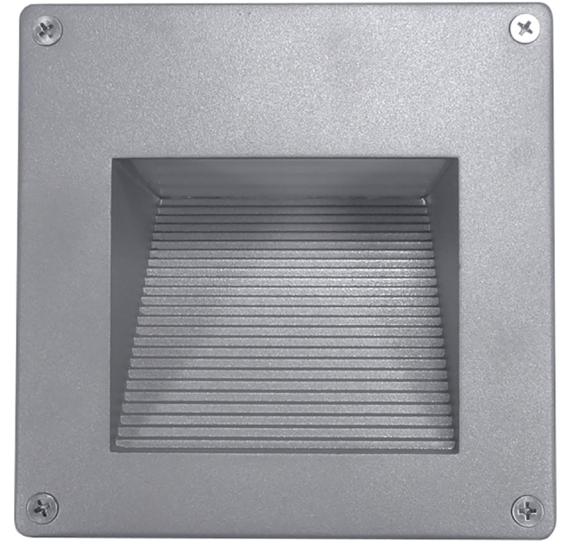
Series	Source	Wattage/Max
1206	LED	3W – 120 Volt only

ORDERING EXAMPLE

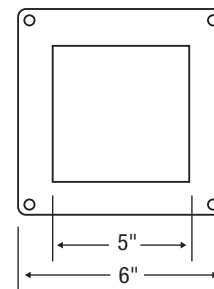
1206 – 3WLED – 30K – 120 – MB

ELCAST LIGHTING

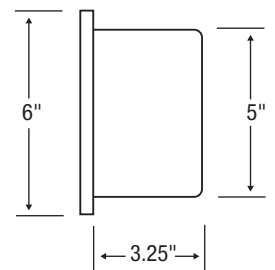
815 S. Kay Ave., Addison, IL 60101 USA • 630.543.5390
www.ElcastLtg.com • ElcastLtg@ElcastLtg.com



FRONT VIEW – BACK BOX



SIDE VIEW – BACK BOX



Made in USA – 5 year limited warranty

©2017. Specifications are subject to change without notice. Consult factory for verification.