

TF-1216 Series



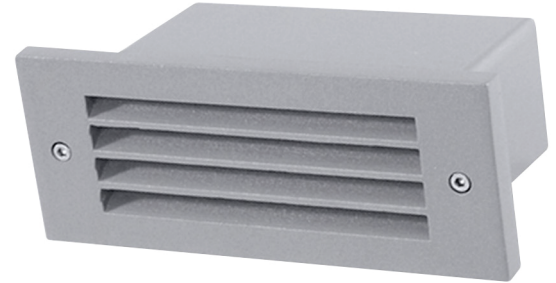
LED Mini Architectural Steplight

Type:

Catalog Number:

Project/Location:

Approved By:



SPECIFICATIONS

Housing: Heavy-duty construction of corrosion resistant die cast aluminum. Faceplate shall be secured using stainless steel hardware. Housing provided with 1/2" conduit opening. Suitable for concrete pour.

Gasket: Closed cell silicone foam gasket. Seals out moisture, dust, and insects for weather-tight operation.

Mounting: Recessed wall or optional surface box.

Lens: 1/8" thick, tempered, diffused glass or impact resistant UV stabilized, polycarbonate lens.

Driver: Solid state electronic constant current. Input voltage 120 Volt only. Operating temperature -20°C to 40°C, Power Factor $\geq .90$.

LED: Specify amber (A), blue (B), green (G), red (R), or 3000 (30K), 3500 (35K), 4000 (40K), and 5000K (50K). 40K Standard.

Lumens: 120.

Finish/Colors: Zinc based primer with polyester powder coat finish in Matte Black (MB), Matte White (MW), Matte Bronze (BZ), Silver Gray (SG), or a custom color (CC).

Testing: LM79, LM80, ETL.

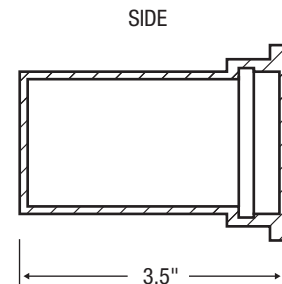
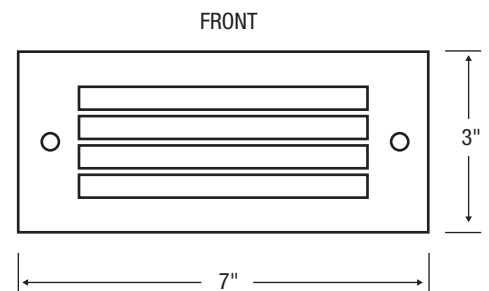
Conforms to UL Standard 1598. Suitable for wet locations.

Options:

FLA Harsh environment finish

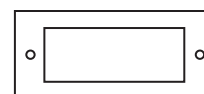
TF Turtle Friendly 590 nm Amber LED

See options page for additional information or consult factory.

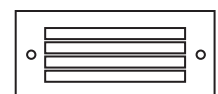


FRAME OPTIONS

1-LENS FRAME



2-LOUVERS



Series	Source	Wattage/Max
TF-1216	LED	3W – 120 Volt only

ORDERING EXAMPLE

TF-1216 – 2 – 3WLED – A – 120 – MB

ELCAST LIGHTING

815 S. Kay Ave., Addison, IL 60101 USA • 630.543.5390
www.ElcastLtg.com • ElcastLtg@ElcastLtg.com

Made in USA – 5 year limited warranty

©2017. Specifications are subject to change without notice. Consult factory for verification.

REV 05-19